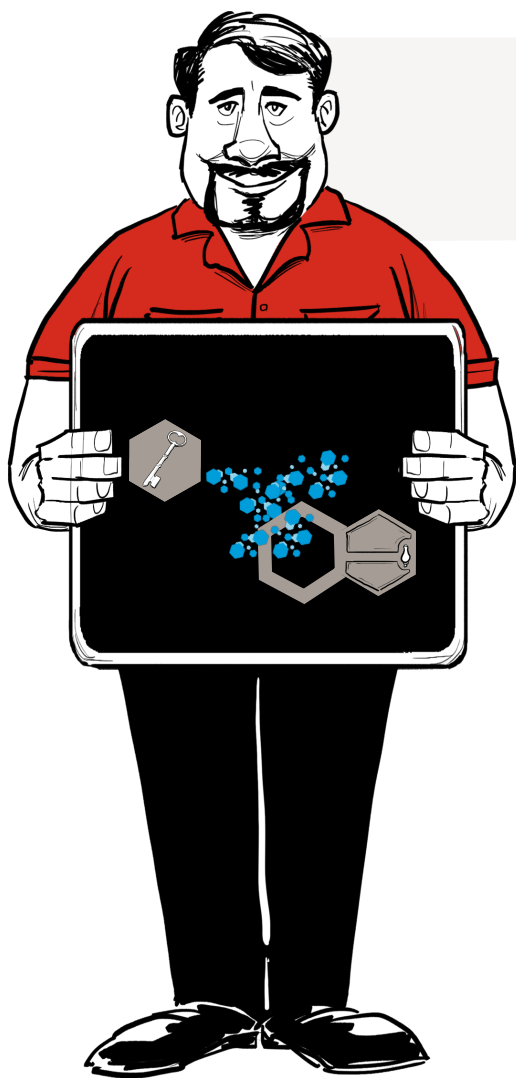




WHAT IS LONG-ACTING INSULIN?

IF YOUR DOCTOR IS CONSIDERING A LONG-LASTING INSULIN for you, your body likely needs help balancing your blood sugar levels.



Insulin acts as a key that unlocks doors in different cells so that the cells can use or store sugar.

LONG-ACTING INSULIN

is usually taken once a day. It works slowly, releasing a steady supply of insulin to help you control your blood sugar levels all day and night.



YOU SHOULD KNOW:

All medicines, including long-lasting insulin have side effects. As you and your doctor discuss treatment options, it is important that you ask about the benefits and risks of each treatment option.

Text the keyword **LONG** to 85099 to watch the video on your mobile phone or visit [LillyDiabetes.com/Type2](https://www.LillyDiabetes.com/Type2) to learn more about Type 2 diabetes. Message and data rates may apply.

For informational purposes only. Not an endorsement of any Lilly product.

American Diabetes Association® Standards of Medical Care

PP-LD-US-2240 10/2020 ©Lilly USA, LLC 2020.

All rights reserved.

TYPE
2

DIABETES

Lilly